

# 南灣台福基督教會和會程序

## EFCSB General Membership Meeting

主後二零一一年一月三十日

JANUARY 30, 2011

1. 書記點名.....Doug Yee 執事  
Roll Call Deacon Doug Yee
2. 開會祈禱..... Willis Shu 執事  
Opening Prayer Deacon Willis Shu
3. 牧師勉勵.....呂紹昌牧師  
Encouragement Rev. Jeffrey Lu
4. 牧禱.....呂紹昌牧師  
Pastor Prayer Rev. Jeffrey Lu
5. 報告..... Willis Shu 執事  
Reports Deacon Willis Shu
6. 結算/預算.....高陽執事  
2010 Expenditure / 2011 Budget Deacon Justin Kao
7. 稽查改選.....會 員  
Election of Auditor Members
8. 臨時動議.....會 員  
Other Members
9. 閉會祈禱.....鄭志榮牧師  
Closing Prayer Rev. Byron Jung



## 南灣台福基督教會 2011 年預定行事曆

主題：全地敬拜，萬民頌揚（詩篇六十六章 4-8 節）

月份	日期	活動名稱（地點）	參考節日
一月	2 日 9 日 23 日 30 日	新年度長執、團契會長就任 長執會 洗禮（華） 2011 年定期和會（會員大會）	1/1 元旦
二月	6 日 25 日 25 日	聖餐（台） 南加州婦女靈修會 第廿六屆第四次總委會	2/3 農曆新年
三月	13 日 24 日 24 日	長執會 南加州 2011 聯合傳教師會 南加州行政同工暨秘書會議	3/13 日光節約時間開始
四月	3-23 22 日 24 日	廿一天連鎖禁食禱告日（台） 受難節聖餐紀念禮拜 復活節讚美禮拜（洗禮）（台）	4/22 耶穌受難日 4/24 復活節
五月	5 日 8 日 8 日 14 日 22 日 26 日	國定聯禱日 母親節主日台華英聯合主日崇拜 長執會 神學院畢業典禮（洛福教會） 神學主日 南加州 2011 聯合傳教師會	神學院月 5/8 母親節 5/30 國殤日
六月	3 日 5 日	第廿六屆第五次總委會（總會辦事處） 聖餐（台）	6/6 端午節 6/19 父親節
七月	4 日 10 日 28 日	野外禮拜（台） 長執會 南加州 2011 聯合傳教師會	7/4 國慶日
八月	7 日 22-9/11 日	聖餐（台） 21 天連鎖禁食禱告日（台）	
九月	11 日 11 日 17 日 22 日 22 日 25 日	本會設教 31 週年紀念主日（台、華、英聯合禮拜） 長執會 ABC 2011 北美華人基督徒教育大會（洛福教會） 南加州 2011 聯合傳教師會 南加州行政同工暨秘書會議 和會選舉 2012 年度長執	9/5 勞工節 9/12 中秋節
十月	1 日 2 日 23 日	長輩親睦會（洛福教會） 聖餐（台） 傳播主日	
十一月	4 日 13 日 20 日	第廿六屆第六次總委會（總會辦事處） 長執會 感恩節主日（洗禮），感恩節特別聚餐/聚會	11/6 日光節約時間結束 11/24 感恩節
十二月	4 日 11 日 25 日	聖餐（台） 長執會 聖誕讚美禮拜、聖誕聚餐慶祝晚會	12/25 聖誕節

## EFCSB 2011 Church Master Calendar

**Theme" All the Earth Bows to You, All the Nations Praise Your Name."  
( Psalm 66:4-8 )**

Month	Date	Event (Location)	Remarks
January	2	New Elder/Deacon Installation	1/1 New Year's Day
	9	Board Meeting	
	23	baptism (M)	
	30	General Membership Meeting	
February	6	Communion Service (T)	2/3 Chinese Lunar New Year
	25	S. Cal Women Retreat	
	25	The 4 <sup>th</sup> EFCGA Executive Board Meeting	
March	13	Board Meeting	3/13 Daylight Saving Time begins
	24	S. Cal Tri-Region MA Meeting	
	24	S. Cal Administrator and secretaries' Meeting	
April	3-23	21day fast and prayer chain(T)	4/22 Good Friday 4/24 Easter
	22	Good Friday Service	
	24	Easter Sunday; baptism(T)	
May	5	National Prayer Day	5/8 Mother's Day 5/30 Memorial Day
	8	Mother's Day; Joint Service(T/M/E)	
	8	Board Meeting	
	14	LES Commencement (EFCLA)	
	22	LES Sunday	
	26	S. Cal Tri-Region MA Meeting	
June	3	The 5 <sup>th</sup> EFCGA Executive Board Meeting	6/6 Dragon Boat Festival 6/19 Father's Day
	5	Communion Service (T)	
July	4	Family Retreat(T)	7/4 Independence Day
	10	Board Meeting	
	28	S. Cal Tri-Region MA Meeting	
August	7	Communion Service(T)	
	22-9/11	21day fast and prayer chain(T)	
September	11	EFCSB 31 <sup>th</sup> Year Anniversary; Joint Service (T/M/E)	9/5 Labor Day 9/12 Mid-Autumn Festival
	11	Board Meeting	
	17	ABC 2011(EFCLA)	
	22	S. Cal Tri-Region MA Meeting	
	22	S. Cal Administrator and secretaries' Meeting	
	25	General Membership Meeting	
October	1	S. Cal Senior's Fellowship (EFCLA)	
	2	Communion Service (T)	
	23	EFCCC Sunday	
November	4	The 5 <sup>th</sup> EFCGA Executive	11/6 Daylight Saving Time ends 11/24 Thanksgiving
	13	Board Meeting	
	20	Thanksgiving Sunday Service, Thanksgiving Dinner	
December	4	Communion Service (T),	12/25 Christmas
	11	Board Meeting	
	25	Joint Christmas Service, Dinner & Celebration	

## 南灣台福基督教會二零一零年教勢報告

牧師室: 許健全牧師 Isaac Hsu, 鄭志榮牧師 Byron Jung, 林勝弘傳道 Stephen Lin, 蔡豐智弟兄 Peter Tsai

受洗名單: 高謝粉姊妹, 高靜怡姊妹, 張琦玉姊妹, 瞿敏姊妹及崔巍弟兄

會員入籍: Mary Cheng

### 2010 年大事:

1 月華語堂成立哈利路亞團契, 於每月第一、第三個星期二聚會。

1/25-2/5 日 Maria Huang、Yvonne Hsieh 參加緬甸福音隊。

2 月建造北側籃球場/停車場。

4/16 舉辦藝人東方比利, 歌星劉欣如及鐘舜貴牧師的「三合一詩歌佈道會」。

5/7 (週五) 台灣鄉村福音佈道團總幹事陳文逸牧師分享見證。

6/26 舉辦『清倉大拍賣』為青海及緬甸事工的奉獻。

7/3-7/5 日台語堂舉辦國慶日三天兩夜的舊金山野外禮拜郊遊活動。

7 月 華中短宣, 為期兩週。

7/30-8/1 日兒童事工部舉辦 VBS (Vacation Bible School), 主題 "Hero Headquarter"。

8 月 開始慈惠濟貧的事工 (Grace & Love Ministry)。

9 月 開始每星期一至星期五早上 7:00-8:00 的晨禱會。

9/12 教會設教三十週年感恩主日, 華、台、英聯合禮拜; 講員: 陳敏欽牧師。

10/3 真善美家庭協會與台語堂合作舉辦家庭成長營。

10/16-10/25 台灣短宣。

10/24 教會會員大會選出 2011 年執事: 黃于峯 (Cynthia Cheng), 高陽 (Justin Kao), 郭金憲 (Shawn Kuo), 廖評超 (Ping-Chau Liao), Willis Shu, 吳東昇 (Jack Wu), Douglas Yee。

11/12 Shoebox Gift Night 支持 Samaritan's Purse Ministry "Operation Christmas Child"。

12/5 Byron Jung 按牧典禮。

12/11 邀請泥土音樂事工舉行聖誕音樂福音晚會。

12/19 舉行聖誕讚美禮拜, 三堂聯合慶祝晚會。

## **2010 Annual Report of EFC South Bay**

Pastor Office: Pastor Isaac Hsu, Pastor Byron Jung, Minister Stephen Lin and Peter Tsai

Baptized: Xia-feng Kao, Jing-Yi Kao, Marian Chang, Min Qu and Lance Cui

Membership transfer: Mary Cheng

### **Major Events in 2010:**

Jan. Start Hallelujah Fellowship every 1<sup>st</sup> and 3rd Tuesday every month (Mandarin)

1/25-2/5 Maria Huang and Yvonne Hsieh join Myanmar mission

Feb. Parking Lot Construction

4/16 Evangelism night (Mandarin and Taiwanese)

5/7 The sharing night – Rev. Chen from “Village Gospel Mission”

6/26 Church wide Rummage Sale

7/3-7/5 Independence Day Family Retreat (Taiwanese)

July Two week's China Mission

7/30-8/1 Vacation Bible School, "Hero Headquarter"

Aug. Start “Grace & Love Ministry”

Sep. Start Prayer Meeting in the morning Mon-Fri 7:00-8:00

9/12 EFCSB's 30th Anniversary Service, Speaker: Pastor Peter Chen

10/03 New Life for Family (Taiwanese)

10/16-10/25 Mission to Taiwan

10/24 EFCSB Membership meeting, 2011 Deacon : Cynthia Cheng, Justin Kao, Shawn Kuo, Ping-Chau Liao, Willis Shu, Jack Wu and Douglas Yee

11/12 Shoebox Gift Night to support Operation Christmas Child, Samaritan's Purse Ministry

12/5 Ordination for Byron Jung

12/11 Invited Clay Music from Taiwan for Christmas Music Night

12/19 Church wide Christmas Celebration

# Elder/Deacon Board Report Yr2011 Membership Meeting

EFC of South Bay

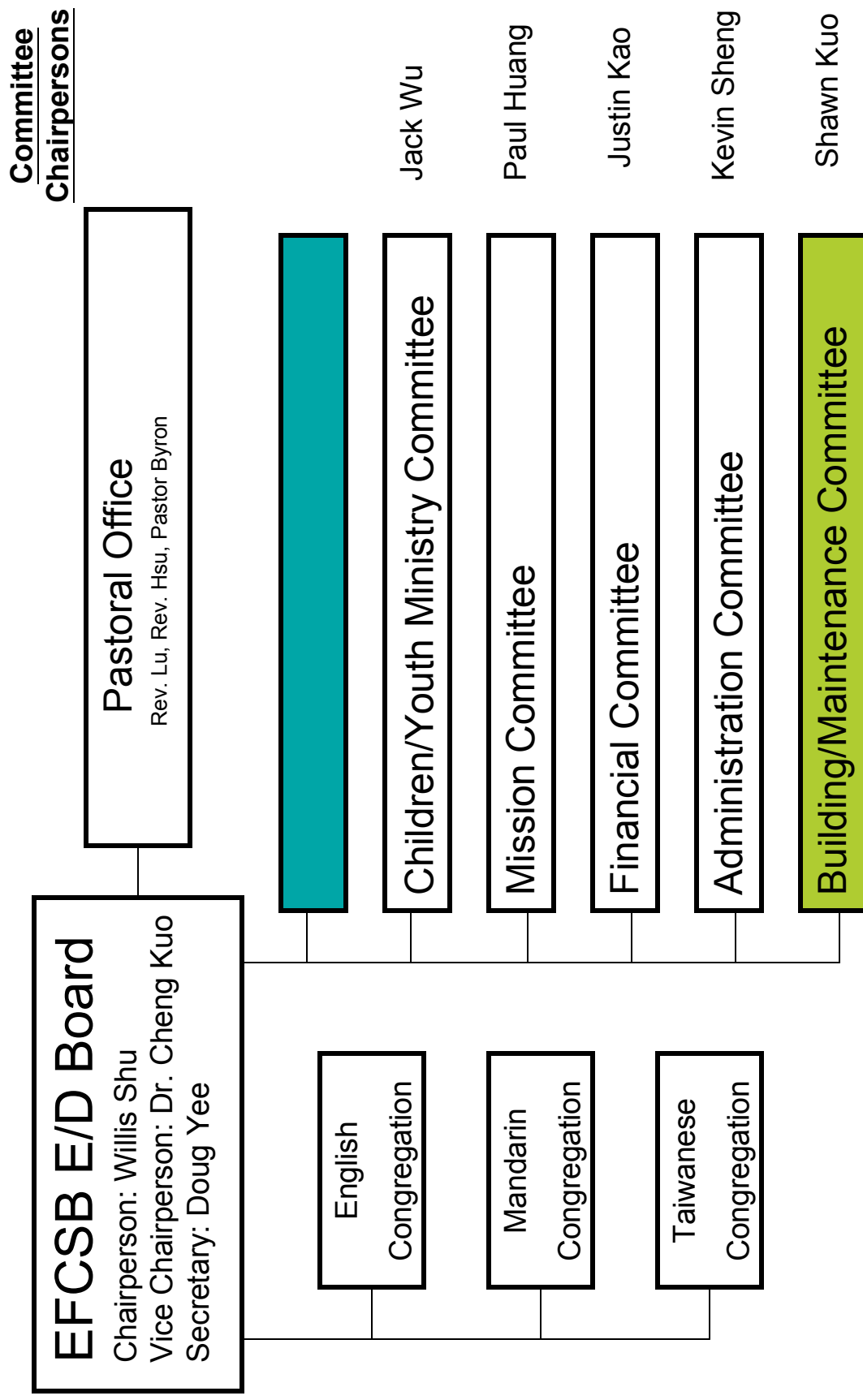
**January 30, 2011**

# **EFC South Bay Transition Plan 2011**

- **The purpose of the EFCSB Transition Plan is to change the allocation of leadership and resources, to have time to redirect/readjust all three congregations back to one church model as defined by EFC Bylaw, also to give our church members time to heal and time to regain trust in one another while providing an environment where our leadership can mature and grow into the biblical pattern.**



# Current EFCSB Church Structure



## **Focus Areas – Pastoral Office**

- **Strategic Planning Committee and the Church Structure/Operating Committee has been dissolved.**
- **Rev. Jeffery Lu (GA appointed Supervising Pastor)**
- **Pastor Byron Jung ordained on December 5, 2010.**
- **Mandarin congregation continues to search for pastor.**

## **Focus Areas – Finance**

- **Offerings from three congregations will be entered into central account starting 2011.**
- **All expenses will be paid from central account according to the approved budget.**
- **Each congregation has a operating account and reserve fund.**
- **Pastoral Salaries to be paid out of central account - benefits held consistent for 2011.**
- **Account reconciliation and audit will be completed quarterly and by the end of the year.**

# Elder/Deacon Board's Report

## (EFCSB's 5-Year Growth Plan in Sunday Attendance)

區會名稱: Southern California Central Region

教會名稱: EFC of South Bay

年份(Year)	台(Taiwanese)	華(Mandarin)	英(English)	兒童(Children)	總計(Total)
2009	78	74	35	41	228
2010	86	85	42	48	261
2011	94	97	55	55	301
2012	104	112	70	67	352
2013	114	129	80	80	403
2014	126	148	100	95	469
2015	138	170	112	112	532

Year (Quarter)	Taiwanese	Mandarin	English	CYM	Total
2009Q4 Ave	78	68	38	46	230
2010Q4 Ave	70	68	41	37	215

## **2010 EFCSB/HARVEST SOUTH BAY CHILDREN & YOUTH MINISTRY (CYM) REPORT**

- **Sunday attendance:** Average 45 students from toddlers to 6th divided into 5 classes. About 21 teachers/aids rotate to teach lessons. The Junior High/High School students now attend Sunday school upstairs with the English Group.
- **Friday night fellowship:** Currently, about 25 students from pre-k to 6<sup>th</sup> Grade attend, led by Reni Huang, and helper Linda Tsai. About 8 Junior High/High School students attend a separate Youth Group program called “Ignite” upstairs, led by Martin Tsai and Stephanie Liu, and helpers Chris Maruyama and Julie Nitao.
- A new CYM worship team is created, led by 4<sup>th</sup>, 5<sup>th</sup> and 6<sup>th</sup> graders.
- **2010 Major CYM events:**
  - Easter Egg Hunt, games, and Praise performance
  - Rummage Sale to raise money for Missions
  - Summer Vacation Bible School (VBS) – total attendance: 35 students, 2<sup>nd</sup> VBS for EFCSB
  - October – Pumpkin Carving
  - December – Christmas performance
  - Attend All-EFC Winter Retreat

### **2011 UPCOMING EVENTS:**

February – Bible Memory Verse Contest

April – Easter Program

May – Mother’s Day program

July – 3<sup>rd</sup> Annual VBS

December – Christmas Program

# Mission Committee Report

## Report for 2010

- Continued supporting and praying for Mike and Nancy Tseng in China.
- Five members from English and Mandarin Group participated in short-term Amdo Mission in July, 2010.
- Eleven members from Taiwanese Group participated in a 10-day short-term mission in Taiwan during October, 2010.
- Between July 22 and September, an outreach team from Taiwanese Group, led by Minister Lin, shared the Gospel with the patients of some local Rehabilitation Centers and Care Centers in the South Bay area on 5 different occasions.

## Plan for 2011

- Continue to financially support and pray for the on-going long-term missionary activities:
  - Mike and Nancy Tseng (Amdo)
  - Danny and Lilian Hsu
  - Janet Hsieh (Wycliff Bible Translation)
- Continue to financially support short-term missionary activities, if any:
  - Taiwan Short Mission
  - Short-term mission to China
  - Myanmar Short Mission
- Provide some financial support to the following EFC organizations:
  - Logos Evangelical Seminary
  - Global Life Enrichment Center
  - EFC Communication Center
- Provide some monthly financial support to the newly planted churches (2 churches maximum) in EFC's Southern California Central Region (New in 2011)
- With Board's blessing, hold a church-wide Mission Rally (Fri, Sat, and Sun) inviting outside speaker(s), raising Mission Fund, and encouraging church members to participate in short-term, mid-term, or long-term missionary activities.

## 二零一一年台語事工回顧與展望

許健全牧師事工報告

### 1. 三年靈修讀經計畫

從去年年初開始的三年靈修讀經計畫，已順利完成一年。感謝主，有不少的兄姊都努力跟著進度在實行。雖然也有脫隊的，盼兄姊們能不氣餒不中止。

盼今年繼續藉著小組運作，鼓勵兄姊隨時加入。並在每次小組聚會，安排機會給兄姊作讀經分享，以激勵藉靈修促進靈命增長。更鼓勵推動背經運動。

### 2. 禱告事工

主日晨禱(8:30-9:00)：過去一年來參加人數穩定在十五名左右到二十名左右。今年起請每位參與服事的兄姊，能自我期許與要求，努力以禱告開始服事。

週間晨禱：週一至週五每天清晨 7:00-8:00，由南灣區牧者同工和兄姊們在本教會舉行。平均每天有十名左右參加，本會有多位台華語堂姊妹固定出席。期盼能有更多同工兄姊一起來同心禱告，在教會，家庭和人心點燃禱告的火。

### 3. 小組事工

過去一年來四個小組兄姊在穩定運作中生命成長，但人數並未達到預定百分之十的成長。盼今年繼續藉著發揮敬拜，學習真理，服事，團契，傳福音等諸項教會功能為目標，並鼓勵人人參與服事，且達成栽培訓練同工的目的。也希望各小組有所突破，不但能人數成長，也能在教會附近區域新增一小組。

### 4. 團契事工

迦勒與姊妹兩團契每月兩次的固定聯合聚會，兄弟團契不定期舉辦活動，野外禮拜，以及詩班成員固定的練習和忠實事奉。期望藉由穩定的追求，肢體關係的互動，及愛和盡心的服事中，不斷地學習成長，同心建造主榮耀的教會。

### 5. 牧養關懷事工

教會的牧養關顧事工，一直需要長執和所有同工的參與配搭，藉著在小組，團契和教會肢體中的互相關懷牧養，彼此扶持達至所有肢體的長大成熟。就能有餘力去傳福音栽培新人。而牧者則能多發展個人事工，幫助較需要的肢體。

### 6. 基督徒教育事工

主日學課程均按照過去的三年規劃順利進行，感謝神，在教育組黃啓富長老精心策劃，和林勝弘傳道大力協助推動下，相信兄姊必受益良多。尤其擔任教導的老師，當必蒙受更大的祝福。更感謝神的是，每年都蒙受莊瑞陽長老長途跋涉，任勞任怨地來本會教導一季的課程，願神紀念報答。

可及早與神學院作整個課程的全盤規劃，在本會開課方便兄姊裝備造就。

## 7.傳福音台灣宣道事工

一年一度的回台宣教事工，感謝主，台語宣道組在劉沈月娥姊推動下，去年短宣隊在領隊葉文章牧師帶領下順利完成任務。今年回台短宣計劃，將繼續推動或鼓勵兄姊往中宣(即個人或夫婦回台在一固定教會，幫助一個月至三個月不等的宣教策略。)方向去作委身，預備與實行仍有待決定。

期盼多鼓勵兄姊在本地區的傳福音行動，藉著從實際運作來操練與學習。

## 8.慈惠愛心事工

為配合台福在台灣宣道植堂，並以實際行動幫助在台灣貧困家庭需要，且帶領他們得救歸主。去年經由長執會決議通過，將經由許牧師來推動慈惠愛心濟貧的事工(Grace & Love Ministry)。簡略報告支出如下：，推動擴大

1)Oct. 03, 2010 教會開出第一張支票美金一千五百四十元(US\$ 1,540.00)，匯寄美金一千二百元(US\$ 1,200.00 折合 NT\$37,800.00)給花蓮真愛台福教會，為扶助貧困家庭。另匯寄美金三百四十元(US\$ 340.00)給中壢光台福教會，為支持清寒學生就學。

此次共有六個受惠家庭與單位：兩個家庭各領一個月，一個家庭領兩個月，以及愛加倍學園領兩個月。

2)Dec.19 2010 (主日) 開出一張支票美金九千七百元整(US\$9,700.00)，匯回給真愛台福教會，將分兩次(在聖誕節前，和舊曆年除夕前)分發給清寒貧困的會友家庭。元月 7 日陳牧師來信報告：匯款折合 NT\$ 289,739 元，先發出 NT\$ 70,000 元，尾款將於 1 月底以前發出(若蒙貴會同意，將部份保留在 2~3 月發放)，我們期待能讓這些愛心捐款發揮最大的邊際效益！

此次有九個受惠家庭，以及一個單位即愛加倍學園。

3)感謝神，自鼓勵推動慈惠愛心事工以來，本堂有二十位兄姊共同支持一位姊妹林雅玲，獻身在台灣台福神學院分校唸書裝備為期三年。這個愛心行動並沒入賬本會，乃經由總會直接匯寄給該姊妹。

4)感謝神，自去年五六月推動此事工以來，本堂至少有五位以上的兄姊，私下個別參與資助(也未經由本會)在台的台福教會和植堂宣教事工。

5)自今年起此事工的推動，許牧師將提出組織委員會，由該會來運作執行。

## 9.開擴服事的視野與境界

已與南灣地區牧者同工，一起發展跨教會的聯合事工。除目前週一至週五的每天晨禱會外，將組織代禱者團隊，及培育訓練代禱者的系列課程與聚會。並計劃推動不同的事工團隊。例如：家庭營事工，醫治釋回事工，清泉門訓事工等等。



## 2010 年台語宣教事工報告

### 宣教異象：

「你們要去，使萬民作我的門徒，奉父子聖靈的名，給他們施洗。(或作給他們施洗，歸於父子聖靈的名)」『凡我所吩咐你們的，都教訓他們遵守。我就常與你們同在，直到世界的末了。』(馬太福音28:19-20)

回應神大使命的託咐，激勵信徒人人參予宣教，贏得未得之民，滿足神的心意。

### 宣教目標：

- A. 投入本地宣教事工，完成傳福音大使命。(路 10:27)
- B. 支持台福宣教事工，關懷弱小教會，參予總會開拓教會異象。(徒1:8)
- C. 參予有關台灣鄉村福音事工，關懷弱勢族群。(太9:35-38)

### 社區宣教地點：

- a. July 22, 2010 Vista Lee Rosa 查經及探訪 長者
- b. Aug. 9, 2010 Heritage Rehabilitation Center 探訪張世衡牧師
- c. Aug. 22, 2010 Torrance Care Center West 主日禮拜及病房探訪
- d. Aug. 26, 2010 Vista Lee Rosa 彩虹查經班慶生會
- e. Sep 26, 2010 Torrance Care Center West 主日禮拜及病房探訪
- f. Nov. 18, 2010 Vista Lee Rosa 彩虹查經班慶生會
- g. Dec. 14, 2010 Torrance Care Center West 聖誕節報佳音

### 台灣宣教時間：

Oct. 16, 2010 -- Oct. 24, 2010

### 台灣宣教地點：

- |             |           |
|-------------|-----------|
| 1. 高雄仁雄台福教會 | 5. 高雄仁武國小 |
| 2. 高雄左楠台福教會 | 6. 高雄燕巢監獄 |
| 3. 彰化台福基督教會 | 7. 員林員生醫院 |
| 4. 員林台福基督教會 | 8. 員林大葉大學 |

### 宣教訓練：

4/7 2010 第一次台語同工及宣教團員開會。

確定異象/目標/服事地點/費用預估。

4/18 2010 開始第一次宣教訓練。

9/29 2010 宣教訓練結束。

### 檢討：

1. 今年台灣短宣目標是到『想增長的教會』中去學習傳福音，這些教會都是會友較少，同工較少，我們一團共11人，似乎帶給他們很大的壓力。以後可分成兩隊，到兩個不同教會服事。
2. 若教會持續的有『宣教事工』時，建議買一套方便又可攜帶式的音響來使用。我們自備的唱機實在很克難，效果又不好。
3. 建議教會在短宣事工上經費能夠寬裕一點，不要為了制度上的規定，而顯得拘謹。
4. 請教會台語宣教部門，制定一套短宣經費補助辦法，並於年初的和會手冊上公佈，讓每位會友都能了解，避免不必要的誤會產生。
5. 有關社區宣教事工，建議納入教會兄弟會及姊妹會內的一項固定事工。

## 詩班事工報告

### 2011 年同工:

指揮 – 彭德福, 蘇清珪, 李運玲

司琴 – 鄭夙娟, 蘇清珪, 李運玲

班長 – 闕雅韻

副班長 – 吳素美

顧問 – 葉文章, 劉寬平

靈修 – 郭鍾鳳嬌, 黃久惠, 沈月娥

聲樂指導 – 彭德福, 江慧音, 王瑋

聯絡關懷 – 楊惠美, 吳鏗盧, 尤美玲, 林麗連

詩譜管理 – 林靜華, 陳慧蓉, 陳昭華

吳鏗盧, 錢佩玲, 郭金憲

總務組 – 蔡新德, 陳國彬, 郭正隆, 廖評超

會計組 – 楊惠美

### 2011 年計劃:

1. 復活節讚美禮拜
2. 十二月聖誕節讚美禮拜
3. 聯誼會 (不定期, 2-3 次)
4. 詩袍維修

2011 年預算: 共 \$6,500.00

鋼琴師: \$6000.00

雜費: \$500.00

## 2011 年南灣台福和平小組檢討與展望

1-15-2011

廖評超

感謝主的保守和看顧，和平小組在去年年度中，一切平安。雖沒有在人數上有成長，但是在弟兄姐妹之間，除了因出外旅行或是身體不適之外，不論是在參加聚會或是討論分享，也都是很活潑與踴躍。一般小組聚會約由七、八位弟兄姐妹輪流帶領，有一次也由來美探親的翁漢義牧師帶領分享。平均聚會人數約在十五人到二十人之間，地點是在啓富長老家或評超家中。在去年度中，我們小組也有四次的聚餐。

有一點遺憾的事就是沒有達到預期 10%成長的目標。雖然我們沒有量的增加，但是我們也更渴慕小組成員的質能不斷的成長。除了勝弘傳道在教會整體的服事之外，素美姊，靜華姐，碧綢姐，久惠姐，雅韻姐等人都能藉著更多的參與和裝備來服事。她們都積極參與台福總會婦女會，台福青松會，南灣教會婦女會，和本地區養老院關懷的的服事。

在新的一年之中，我們計劃用一些時間來作探訪的事工，特別是對那些曾經到過教會或小組的慕道朋友。透過關心探訪，禱告，談道，或陪讀聖經等等，更多祈求上帝的靈親自在那些人身上作感動的工，慢慢除去他們心中的障礙，使他們樂意參加小組或教會的聚會，終成為神家有福氣的人。

**2010 年度:**      **平安小組**      **戴繼盛報告**      Jan. 18, 11

1. 平常聚會都於隔週星期三晚上 8-9:30. 每個月 2 次, 聚會人數約 10-12 位。
2. 聚會地點：每家輪流.
3. 聚會討論資料 由牧師提供，並由組員輪流帶領主持。
4. 在 2010 年在劉寬平府上舉辦盛大的感恩家庭禮拜及聚餐, 全教會兄弟姐妹很踴躍參加。

**2011 年計劃：**

- 繼續去年的型式於隔週星期三晚上聚會。
  - 要繼續討論如何增加吸收新會員/ 慕道友，我們鎖定幾個目標，祈求主繼續引導。
- 

**2010 年度:**      **迦勒團契報告**

會 長: 吳鎧廬	副會長: 城玉瑛
顧 問: 高文雄 陳瑞珠 劉寬平 呂玲偕	靈 修: 黃保羅 盧季芬
關懷聯絡: 余吳淑慧 游吳秀子	會 計: 劉元和
出 納: 郭鳳嬌	康 樂: 吳楊美惠 蔡尤喜惠

活 動: 每月第二、四週的星期二上午九點半在教會與  
姐妹會聯合聚會。講員: 許牧師、林勝弘傳道或外來講員。  
見證分享、讚美操。

費用明細：

1. 講員謝禮：\$300
  2. 受洗鮮花：\$17
  3. 一年聚會茶點費用：\$183
- 總共 \$500

## 2011 年 度 大餅小組—尤美玲報告

稟持過去大餅小組的精神並且將餅做大, 分享尚未嚐到 主恩的人:

- 1)小組成員互相關懷.
- 2)配合教會三年讀經計劃.
- 3)隨著今年主題:” 全地敬拜,萬民頌揚 “在小組實踐.
- 4)預計每月一次 pot luck(大餅+風味小吃)廣邀未信者參加.
- 5)不定期探訪需要的人.
- 6)郊遊, 踏青, 廣招有興趣者.
- 7)認養貧童.

預算:自掏腰包

---

## 2011 年仁愛小組事工計劃書：

### 一. 小組成員:

- a. 小組指導：葉文章牧師/師母
- b. 小組組長：劉沈月娥
- c. 副組長：美麗姐 / 掌珠姐
- d. 關懷組：鳳驕姐 / 昭華姐
- e. 連絡組：保羅嫂 / 喜惠姐
- f. 敬拜組：新德兄 / 保羅兄 / 德福兄/ 慧音姐
- g. 司琴組：運玲姐 / 慧容姐

### 二. 小組目標：

- a. 加強肢體間的關懷與互動
- b. 辦理活動帶領未信者歸主
- c. 學習聖經真理使靈命增長
- d. 藉事工傳承各個能服事主

### 三. 小組計劃：

- a. 每兩個禮拜有不同主題的聚會
- b. 每季中舉辦不同的戶內外活動
- b. 預先規劃聖誕節音樂福音演出

## 姊妹團契事工報告

### 2011 年同工:

會長 - 林靜華

副會長 - 洪林慎訓 廖雅韻

靈修 - 李碧綢, 盧季芬, 吳素美

關懷 - 吳秀子, 黃久惠, 林麗連

音樂 - 彭俐俐, 李運玲, 蘇清珪

服務 - 洪林慎訓,, 王月女, 廖雅韻

記錄: 尤喜惠, 廖雅韻

康樂 - 林麗連, 葉容玲, 惠美

會計 - 錢佩玲

### 2011 年計劃:

1. 社區關懷事工, 每月出去探訪一次 (楊太太公寓會 Nursing Home )
2. 持續讚美操
3. 音樂事奉, 敬拜讚美, 地方宣教
4. 每三個月一次家庭聚會 (3 月, 6 月, 9 月) 讀書, 生活見證分享

2011 年預算: \$500.00

---

## 2011 年兄弟團契事工計劃

### 組織:

會長: 游景節

副會長: 張肇原

地點選擇: 戴繼盛 蔡新德 郭正隆

場地安排: 莊燦祥

康樂音樂: 陳國彬 吳至明

會計出納: 李國城

### 宗旨:

舉辦各種活動, 培養會友以及慕道友之關係, 增進身心靈發展, 充實日常生活樂趣.

### 活動:

1. 讀書分享.
2. 關節運動.
3. 野外禮拜(暫定 9/3-9/5 Labor day weekend).
4. 健行運動.
5. 郊遊或短程旅遊.
6. 專題演講.
7. 協助教會各種活動.

經費: \$500

## **Mandarin Congregation Report** by F. Peter Tsai

2010 is the year that the Mandarin congregation numerical growth has been stagnant. We didn't reach the numerical growth target we set for this year. Some people claimed we had spiritual growth during the year. However, it cannot be quantified and, from my observation, no obvious sign that we have really achieved such growth. Basically, I consider this year as a period of adjustment after we had rapid growth in previous years. This is a critical moment that will define whether the congregation can be transformed into a different type of congregation that would resume the growth.

- **Tuning the attitudes and mentality:** One thing I have been working and like to continue is to change the mentality and attitude of the members. This includes our thinking on what church should be; relationship with God; and with others. There are lots still needed to be done and I won't underestimate the time would take to accomplish it. This is a continuous journey that would last in coming year. A retreat is planned in May, 2011.
- **Christian Education:** The format of adult Sunday school has changed to provide the flexibility of having outside speakers to give us special (but not consecutive) teaching on selected topics. Those speaker usually can only come more frequently during a period of time but not on a continuous manner. Starting from 2011, we plan to return to the traditional systematic type of classes. In 2010, Cleansing Stream class was organized in our church.
- **Pastoral search:** Peter Tsai has been playing an unconventional role in Mandarin congregation that is not well defined in the EFC Bylaws. He informed Mandarin core coworkers his intention to switch his focus of service to other place and will phase out from here. As a result, the Mandarin congregation needs to speed up the pastoral searching to fill the anticipated change. Several perspective candidates are in contact to seek the possibility of having him/her to serve together at here. Before this position is filled, we have arranged some temporary help in our ministry. During the first half of the year, Allen Nieh helped us on a part-time basis before he accepted an offer at other place.
- **Fellowship among believers:** The Young Couple, Young Adult, and Emmanuel Fellowships continue their meetings in a steady pace. Halleluiah Fellowship was newly formed in 2010. It was established to reach out seniors and people who can attend meeting during weekday morning.
- **Mission:** Two sisters participated a short term mission to Myanmar that was

originally planned at the end of December, 2009 but was rescheduled to January 2010. It was organized by Global Life Enrichment Center. Three Mandarin members joined with the other English members and people from other churches for the Amdo Tibetan short term mission trip in July. The Mandarin team mainly worked with the Chinese House churches. Besides, Peter Tsai also went to eastern China in May and mid-November for a personal mission trip that was arranged by Touch Life Mission and Vision Team respectively.

- **Spiritual Needs of Next Generation:** we are grateful that such needs have been met with the CYM (Children and Youth Ministry) director. The Mandarin congregation will continue to work together with her



## Emmanuel FELLOWSHIP Year 2011 topic and plan----

### Enhancing the relationship with God

God give all his people same promise as Joshua (1:1-9) because he loves us. However, we all have sins and have some aspects God do not like. God promised that all his people can go to heaven and He will forgive the sins we have. How can go live full of God's love and live a sin less life. We need have a good relationship with God.

Jesus has been a great example of Christian. He wants us to be a Christian 24 hours a day. He is a real man and also a real God. When he was a man, he liked us. He also demonstrated human being's characteristics but he never make any mistake and sin. Jesus came to this world to teach us and also let us know He is the way to heaven. Jesus is our example to be a good Christian. This year, the fellowship goal is to enhance our relationship with God and make all of us more like Jesus.

We all know God loves us so much and send his only son to earth. We all know only God is perfect. We all have weaknesses. That is why we need God to strength us. Jesus came to earth and lived together with us to demonstrate His love. He also demonstrated to us how to be a perfect man. He understands us and also give us the chance to get ride of our sins. Jesus' death on the cross not only because of our sins but also gave us a great example of obey. This year, we will continue to study the God's words with focus on the New Testaments.

To enjoy the great loves from God and observe the miracle of God, we will organize a spring outing picnic during the spring break. We will invite the friends to joint us.

Having a better relationship with God also can be seen from the loves of brothers and sisters. Our fellowship has a long history to have pot luck fellowships. We will continue for once a month potluck to strength the relationship between brothers and sisters. We also bring more loves to friends who is looking for the God.

## **Young Couples' Fellowship 雅歌團契**

### **2010 主題 – 凡事謝恩, 各處傳揚**

#### **“Give Thanks Always, Preaching Christ Everywhere”**

2010 Young Couples Fellowship focused on strengthening our knowledge of the Word. Under the guidance led by Yvonne, Kevin, and others, YCF wrapped up our study of the entire Old Testament. In addition, we also organize some special topics related to family and kids education, as well as combining with other fellowships and the Mandarin congregation for special events.

1. Bible study – To experience God is a more rich and meaningful way, YCF set out 2 years ago to go through the entire Bible, from Old Testament through New Testament, to connect the “whole history” together. Through reading the Words, watching documentary films and other movies, we all gained a greater insight into Old Testament. After finished Malachi, Kevin Sheng continues to lead us into New Testament with book of Matthew. Dedications from brothers and sisters like Yvonne, Kevin, Jack, and others made this accomplishment possible.

2. Building Spiritual Second Generation – As our children mature into adolescents, we all recognize the importance of spiritual growth as well. In late 2010 YCF added “Building a Spiritual Second Generation” into our topic studies and will rotate with the Bible study.

3. Sharing God love - We encouraged brothers and sisters to share their experience with God in 2010. Care each other and also care the people near us. Share the Good news to those who is still seeking.

4. Several special events were organized to allow the families to social with each others, as well as other fellowships and CYM, to build a better bond.

Jack Wu

## **Young Couples' Fellowship 雅歌團契**

### **2011 主題 – 全地敬拜, 萬民頌揚 (詩篇六十六章 4-8 節)**

This year we will continue to focus on our spiritual growth and maturity in Christ as one, and to reach out to other brothers and sisters who have not yet know the love of Christ.

To accomplish this, YCF will –

- Diligently study the Word of God – continue study Old Testament and New Testament
- Encourage brothers and sisters to follow the one-year Bible reading plan.
- Incorporate topical studies such as prayer, mission, devotion, and praise, etc.
- Outreach/mission functions within the South Bay community.
- Promote inter-fellowships and inter-congregational activities and sharing.
- Promote retreat and other church activities.

## 南灣台福基督教會華語堂哈利路亞團契 2011 年團契目標及計畫

本團契是 2010 年初組成的小組，每個月第一及第三週二聚會。  
平均出席人數 14 人

在一年中組員的收獲是：

1. 對天主教及佛教有些概念
2. 對腓立比書有些認識
3. 初步的讚美操及太極拳的練習
4. 戶外活動的樂趣

Amy Huang

## 南灣台福基督教會華語堂社青團契 2011 年團契目標及計畫

社青團契目前固定在每週五晚上八點在教會教育館二樓的教室聚會，偶爾也會在契友家聚集。通常隔週是查經的聚會，2010 年查考完使徒行傳後，目前在查以弗所書。平時除了週五團契聚會之外，社青的弟兄姊妹也會彼此分享生活體驗、一起出遊健行，在追尋永恆生命的路上，我們彼此鼓勵，向前奔跑。

社青團契的成員除了原本在南灣教會聚會已久的弟兄姊妹之外，近年，神也帶領一些在外地求學，畢業後到南灣地區就業的社會青年來到教會當中。但願 神繼續使用社青團契，使這些離鄉背井，隻身在美的慕道友 / 基督徒，因著弟兄姊妹彼此的關懷，使他們感受到 神的愛，並有機會認識且委身於耶穌基督。

2011 年團契預算： \$2,500.00

# **Harvest South Bay**

## **2010 Review**

### **Children's Ministry:**

The CYM (Children's and Youth Ministry) continues to be an integral part of the ministry of Harvest, raising the children in the knowledge of the Son of God as well as connecting the whole church with one another. Many of the activities in the CYM serve as outreach opportunities for the Harvest congregation, putting parents in touch with other parents and providing families a chance to interact with those who need to be reached with the Gospel.

### **Community:**

God has brought several developments to the depth of community within Harvest South Bay. Beginning in 2010 our congregation has been partaking of the Lord's Supper on a monthly basis- reminding ourselves of the sacrifice of Christ and that His sacrifice was given to the Lord's church corporately. We also have had the opportunity to celebrate births, child dedications and weddings together, facilitated by the recent ordination of Pastor Jung.

Two new fellowship groups were instituted in 2010 as well. A new career fellowship group met on Tuesday nights throughout the year which ministered to college aged students through young adults. Also, a new youth fellowship began on Friday nights to minister to Junior High and High School students.

### **Membership:**

Over the course of 2010 the average attendance of Harvest has grown both through visitors, new attendees and the participation of Junior High and High School students in our service. We have welcomed these additions and many have already begun to serve in the congregation and the Children's ministry.

### **Missions:**

In 2010, God was teaching our congregation what it means to be "senders" as we supported Mike and Nancy on their first year overseas. Financially supporting, prayerfully supporting and lending our material support in other ways (clothes, gift packages, communication, sending a short term team) has been a great opportunity to stay in touch with God's heart and plan. God has also moved another Harvest couple, Makoto and Amy Tokudome to candidate with Overseas Missionary Fellowship; they were accepted in the Fall of 2010 and look forward to the process ahead of being called and commissioned.

### **Teaching:**

From the pulpit we were challenged by the inspired writings of John, the book of Ephesians and the Psalms of Ascent. During Sunday School, our most recent curriculum on the ministry of the Holy Spirit was a video series from Pr. Francis Chan from Simi Valley. We continue to be encouraged, challenged and nurtured by the Spirit of God through the teaching of God's Word.

### **Youth Ministry:**

As mentioned above, a new Junior High/High School Fellowship began during 2010, IGNITE was so named to remind our youth to be passionate in their relationship with God. During this first year much of their study has been focused on the power of speaking and listening to God through prayer.

# **Harvest South Bay**

## **2011 Goals**

### **Community:**

In the first quarter of 2011, Harvest will be involved in an intensive study of ecclesiology together for 50 days. The curriculum, called “The 50-day Spiritual Adventure” is designed to deepen community, align our hearts toward common themes, and spark discussion concerning our role in God’s Great Commission. During the time the congregation will be asked to study similar material for both their small groups and their quiet times which will complement teaching during Sunday Service.

Throughout the year, our congregation will be encouraged to deepen in their relationships with one another especially through lifting one another up in prayer. Practically, the challenge is to pray with one another in one another’s presence as a normal part of our relationships throughout the year.

### **Discipleship/Evangelism**

Christ’s call is to make disciples of all of the nations and so in 2011 Harvest will be making a goal to multiply the amount of mentoring relationships throughout the congregation. Every member will be challenged either to seek out a spiritual mentor or to be a spiritual mentor to someone who is younger. Encouragement will be provided through training and materials.

Every member of our congregation has also been asked to make it a personal goal to invite at least 2 people to either Sunday Service or some other outreach opportunity in order to increase our opportunities to share the Gospel with those who are not believers.

### **Education**

The first quarter of our Sunday School year will be spent studying how the Gospel changes all of our motivations – not simply in our redemption, but also in our sanctification. This 9 week study delves into how we too often minimize the work of Christ and rely on our own strength.

### **Leadership:**

2011 marks the first year in any EFC that the chairmanship of the Board has been occupied by a member of an English congregation. We see God moving in respect to leaders throughout the church- challenging all of those who are spiritually equipped with gifts of leadership to exhibit maturity and to be examples.

### **Membership:**

For many years our congregation has not diligently encouraged those who attend Harvest to become members also of EFCSB. This year we will make it a point to highlight the importance of membership to the church, to challenge members to use their gifts within the congregation, and to take part in the life of the church as a whole.

### **Target Groups:**

During the coming year, the leadership of Harvest will be targeting specific life stages which are currently missing from our congregation: strategically praying for new members, encouraging existing members, and intentionally growing support in those areas. Our hope is that Harvest can be welcoming all kinds of newcomers.

# EVANGELICAL FORMOSAN CHURCH OF SOUTH BAY

BUDGET FOR YEAR

2011

	INCOME	BUDGET
<b>GENERAL FUND</b>		
ESTIMATED OFFERINGS 預估奉獻	440000	
RENT 租金收入	30800	
<b>TOTAL INCOME 總收入</b>	<b>470800</b>	
<b>(1) SALARIES 薪資</b>		
PASTOR SALARIES 牧師薪資		171700
PASTOR INSURANCE 牧師醫療保險		16000
PASTOR PENSION 牧師退休福利金		17170
MINISTER SALARIES 傳道薪資		5000
PASTOR SABBATICAL FUND 牧師安息年薪資基金		5000
ADMINISTRATIVE SALARIES 行政秘書薪資		10200
CYM DIRECTOR SALARY 兒童少年事工主席薪資		24000
SUB-TOTAL 支出額		<b>249070</b>
<b>(2) EFCGA 總會</b>		
TITHE 十一奉獻		<b>38500</b>
<b>(3) BUILDING 教堂維護維修</b>		
BUILDING FUND TRANSFER 建堂基金		10000
MAINTENANCE/REPAIR 教會維修		20000
CLEANING EXPENSES 教會清潔		12000
SECURITY 教會保全		900
SUB-TOTAL 支出額		<b>42900</b>
<b>(4) MISSION 宣道</b>		
MIKE & NANCY TSENG 支持曾傳道青海藏族事工		16200
DANNY & LILIAN HSU 英文堂支持傳道事工		3000
JANNET OF WYCLIFF 支持 WYCLIFF 聖經翻譯中心事工		3000
LOGOS 台福神學院		1000
GLEC 普世豐盛生命中心		1000
EFCCC 台福傳播中心		500
MISSION EDUCATION 宣道教育課程		2500
LONG & SHORT TERMED MISSION PROJECT SUPPORT 長期及短期宣道支持		22000
EFC CHURCH PLANTING SUPPORTS 台福教會植堂支持		2400
SUB-TOTAL 支出額		<b>51600</b>
<b>(5) LOVE 愛心</b>		<b>2000</b>

<b>(6) FELLOWSHIP 團契</b>		
CALEB 台語迦勒		500
BROTHERS 台語兄弟		500
SISTERS 台語姊妹		500
CHOIR 台語詩班		6500
*OFFERING FOR CHOIR'S ROBE \$5,000 IS RECEIVED & WILL BE SPENT ACCORDINGLY. NO NEED TO INCLUDE IN BUDGET.		
ENGLISH ADULT FELLOWSHIP		250
ENGLISH ENCOURAGE IN-REACH		1000
ENGLISH MEN'S FELLOWSHIP		450
ENGLISH SISTER'S FELLOWSHIP		450
ENGLISH WORSHIP		750
MANDARIN YOUNG COUPLE 華語雅歌		1000
MANDARIN YOUNG ADULT 華語社青		1000
MANDARIN EMMANUEL 華語以馬內利		1000
MANDARIN OTHER FELLOWSHIP 華語其他團契		2500
MANDARIN WORSHIP TEAM 華語敬拜讚美團		1000
MANDARIN FELLOWSHIP SPECIAL PROGRAM 華語團契講座		2000
CYM FELLOWSHIP 兒童少年事工		6500
SUB-TOTAL 支出額		<b>25900</b>
<b>(7) OTHERS 其他費用</b>		
ADVERTISEMENT/PUBLIC RELATIONS/OUTREACH* 廣告公關宣傳		7500
AUTO GAS 牧師探訪汽油		1200
BANK CHARGE 銀行規費		200
BOOK, STUDY MATERIALS, CURRICULUM 書籍教育材料		4000
EDUCATION-CONFERENCES, CLASSES, SEMINARS 講座, 課程, 研討會		3500
EQUIPMENT PURCHASE/LEASE 器材(影印機) 租金及耗材		2000
INSURANCE LIABILITY 教會責任險		4000
INSURANCE WORKERS COMP. 員工保險		1000
INTERNET & WEBSITE HOSTING 網路及網站域名		1300
FESTIVAL & SPECIAL PROGRAM 節慶及特別節目		6700
GUEST SPEAKER HONORARIUM 講員謝儀		4700
KITCHEN SUPPLIES/GROCERY 廚房用具及食品雜貨		3500
MANDARIN PASTOR SEARCHING 華語堂聘牧事宜		3600
OFFICE SUPPLIES 辦公器材		3100
PHONE 電話及牧師手機		1200
PROPERTY TAX 地價稅		2500
SANCTUARY SERVICES 正堂器材及節慶花卉		1000
SUBSCRIPTION 刊物訂閱		500
UTILITIES 水電瓦斯公用品		8500
SUB-TOTAL 支出額		<b>60000</b>
<b>TOTAL EXPENSES 總支出額</b>		<b>469970</b>
<b>BALANCE 結餘</b>		<b>830</b>



# EFC SOUTH BAY, FINANCE DEPT. REPORT

COMMON AFFAIR, LOVE AND MISSION

YEAR: 2010

DATE: JAN. 30, 2011

ITEM		INCOME	THANKSGIVING	EXPENSES	NOTE
OFFERING	TAIWANESE	\$ 120,854.90	\$ 17,510.00	\$ 96,855.43	OFFERINGS JAN. TO DEC.
	ENGLISH	\$ 97,787.36	\$ -	\$ 60,455.55	OFFERINGS JAN. TO NOV.
	MANDARIN	\$ 97,877.35	\$ 600.00	\$ 61,750.75	OFFERINGS JAN. TO NOV.
	*GENERAL INCOME			*70% RETURN OFFERINGS	
	CHILDREN	\$ 116.43	\$ -	\$ -	
SUBTOTAL		\$ 316,636.04	\$ 18,110.00	\$ 219,061.73	
RENT	SEASIDE	\$ 19,800.00			
	KOREAN	\$ 9,600.00			
	S.B. CHILDREN CHOIR	\$ 300.00			
	CREATION SCIENCE	\$ 400.00			
	OTHERS	\$ 1,040.00			
SUBTOTAL		\$ 31,140.00			
AGAPE	LUNCH OFFERING	\$ 21,107.00		\$ 19,850.00	
LOVE	HAITI EARTHQUAKE	\$ 3,760.00		\$ 3,760.00	OFFERING UP TO \$ 2,000.00 TOTAL: \$5,245.00 BY FAR
	QINHAI YUSHU EARTHQUAKE	\$ 1,630.00		\$ 1,630.00	
	MYANMAR	\$ 2,640.00		\$ 2,000.00	
	MIKE & NANCY MISSION GIFT	\$ 3,725.00		\$ -	
	GRACE & LOVE	\$ 11,540.00		\$ 11,240.00	CHURCH SUPPORT \$ 500.00
	BILLY WANG 東方比利	\$ 690.00		\$ 690.00	
	TAIWAN GRASS ROOT	\$ 511.00		\$ 1,011.00	
	PASTORS' APPRECIATION			\$ 500.00	
SUBTOTAL		\$ 24,496.00		\$ 20,831.00	
MISSION	GENERAL SUPPORT OFFER	\$ 2,366.24			CHURCH SUPPORT \$ 12,000.00
	OMF/MIKE AND NANCY	\$ 1,496.50		\$ 13,396.50	
	WYCLIFF/JANNET	\$ -		\$ 3,000.00	
	QINHAI 2010 SUMMER	\$ 5,882.00		\$ 6,737.54	
	TAIWAN MISSION	\$ 21,290.00		\$ 18,840.42	CHURCH SUPPORT \$ 1,000.00 CHURCH SUPPORT \$ 1,000.00 CHURCH SUPPORT \$ 500.00
	MYANMAR 緬甸	\$ 1,000.00		\$ 903.34	
	GLEC 普世豐盛中心	\$ 546.50		\$ 1,546.50	
	LOGOS 台福神學院	\$ 110.00		\$ 1,100.00	
	EFCCC 台福傳播中心	\$ 30.00		\$ 530.00	
	OMC 海外校園雜誌	\$ -		\$ 500.00	
SUBTOTAL		\$ 32,721.24		\$ 46,554.30	
BUILDING SUBTOTAL		\$ 11,767.00		\$ 12,650.00	PAID \$ 883.00 FOR PARKING LOT BALANCE PAYMENT

1/2

Jan. 28 2011 Lili

OTHER INTERESTS	\$ 138.46			
REFUND	\$ 2,375.56			
ENGLISH PASTOR 401K	\$ 5,052.63	\$ 5,511.96		OVER PAID TO CONGRE. ETC.
FOR CHOIR NEW ROBE	\$ 5,000.00	\$ -		RESERVED FUND FOR CHOIR
CYM VBS REGISTRATIOI	\$ 350.00			
ANNIVERSARY STAMP	\$ 100.00			
SUBTOTAL	\$ 13,016.65	\$ 5,511.96		
TOTAL	\$ 450,883.93	\$ 18,110.00		
GRAND TOTAL	\$ 468,993.93	\$ 324,458.99		
<b>EXPENSES</b>				
			<b>09 EXPENSES</b>	
ADMINISTRATION				
*ADMINISTRATIVE SALARY	\$ 10,200.00	\$	8,287.50	
*CLEANING	\$ 10,714.78	\$	10,989.15	
*UTILITIES	\$ 7,402.61	\$	6,861.24	
*PROPERTY TAX	\$ 2,127.54	\$	1,943.81	
*WORKER COMP INSURANCE	\$ 681.05	\$	4,651.77	
*SECURITY	\$ 891.00	\$	671.18	
EFCGA 10% TITHE	\$ 33,458.62	\$	33,450.11	
BUILDING				
*MAINTENANCE/REPAIR	\$ 10,654.07	\$	22,870.08	
CHILDREN & YOUTH MINISTRY	\$ 29,954.87	\$	14,000.19	
OFFICE				
*INTERNET SERVICES	\$ 838.76	\$	860.68	
*EQUIPMENT/LEASE	\$ 1,980.72	\$	1,449.48	
*SUPPLIES	\$ 1,263.69	\$	1,378.65	
*PHONE	\$ 1,574.53	\$	1,736.74	
OTHERS				
*ADVERTISEMENT	\$ 750.00	\$	496.21	
*ANNUAL MEETING	\$ 800.00	\$	500.00	
*BANK CHARGE(RETURN ITEM & CHECK)	\$ 119.00	\$	82.95	
*CALENDAR ('10 AND '11)	\$ 922.79	\$	496.89	
*KITCHEN SUPPLIES	\$ 3,282.71	\$	2,850.69	
*EDUCATION	\$ 456.26	\$	400.00	
*FESTIVAL & SPECIAL PROGRAM	\$ 2,655.07	\$	3,153.15	
*GUEST SPEAKER	\$ 800.00			
*SABBATICAL FUND TRANSFER	\$ 500.00	\$	-	
*SANCTUARY SERVICES	\$ 691.24	\$	3,411.99	
*VISITATION/PUBLIC RELATIONS	\$ 1,466.10	\$	717.31	
TOTAL	\$ 124,185.41			
GRAND TOTAL EXPENSES	\$ 448,644.40			
BALANCE	\$ 20,349.53	(\$ 468,993.93 - \$ 448,644.40)		

NOTE:CENTRAL ACCOUNT RESERVED FUND BALANCE \$ 109,237.82 AS OF APR, 10,2010

2/2  
Jan 25 2011 Lh

# EFCSB Taiwanese Congregation

## Income & Expenses

January - December 2010

Total	
<b>Income</b>	
Offerings from Jan. to Dec.	
General (less 30% common affairs)	\$96,855.43
Offerings for choir for changing rope	\$ 5000 (reserved for use in 2011)
<b>Total Income</b>	<b>\$96,855.43</b>
<b>Expenses</b>	
<b>Auto</b>	
Gasoline	\$1,108.30
Repair/Maintenance/DMV	\$344.03
Insurance	\$539.00
<b>Education</b>	<b>\$0.00</b>
<b>Fellowship</b>	
Caleb	\$500.00
Choir	\$4,300.00
Sister's	\$185.00
Brother's	\$290.00
All-members	\$400.00
<b>Guest Speaker Honorarium</b>	<b>\$5,300.00</b>
<b>Insurance</b>	
Medical/Dental	\$13,764.40
<b>Medical Exp.</b>	<b>\$0.00</b>
<b>Pastor/Seminarian Salary</b>	
Pension	\$5,653.20
Pastor Salary	\$56,532.00
<b>Others</b>	
Telephone	\$660.00
<b>Total Expenses</b>	<b>\$89,575.93</b>
<b>Net Income</b>	<b>\$7,279.50</b>

  
1/25/11

# EFCSB Mandarin Congregation

## Income & Expenses

January - December 2010

Total	
<b>Income</b>	
Offerings from Jan. to Nov.	
General (less 30% common affairs)	\$61,750.75
<b>Total Income</b>	<b>\$61,750.75</b>
<b>Expenses</b>	
Caring/Min. Nieh & Min. Tan	\$10,255.00
Guest Speakers Honorarium	\$7,000.00
Travel expenses for guest speaker	\$1,895.21
Donation Qinhai Yushu Earthquake	\$2,500.00
<b>Education Expense</b>	
Adult Sunday School	\$11,817.61
Others	\$30.00
<b>Total Education Expense</b>	<b>\$11,847.61</b>
Bank Charge	\$37.00
Books & Library Supplies	\$1,891.95
Office Supplies	\$18.64
Equipment Purchase / Rental	\$343.83
In Reach	\$3,198.72
Mandarin Emmanuel	\$861.75
Mandarin Young Adult	\$296.56
Mandarin Young Couple	\$298.66
Mandarin Worship Team	\$488.67
Mandarin Hallelujah	\$204.25
Mandarin Hot Soup	\$320.44
Missions	\$6,079.11
Out Reach	\$3,016.29
Pastoral Search	\$1,112.64
Retreat	\$1,344.00
<b>Total Expenses</b>	<b>\$53,010.33</b>
<b>Net Operating Income</b>	<b>\$8,740.42</b>
<b>Other Income</b>	
Interest Earned	\$1,594.76
<b>Total Other Income</b>	<b>\$1,594.76</b>
<b>Net Income (Net Operating + Net Other)</b>	<b>\$10,335.18</b>

### NOTE:

1. RESERVED FUND BALANCE \$ 164,859.18 AS OF DEC. 31, 2010.

1/25/2011 

# EFCSB English Congregation

## Income & Expenses

January - December 2010

Total	
<b>Income</b>	
Offerings from Jan. to Nov.	
General (less 30% common affairs)	\$60,455.55
2009 Refund Offerings from central account	\$332.50
Others	\$980.39
<b>Total Income</b>	<b>\$61,768.44</b>
<b>Expenses</b>	
Education Expense	
Adult Sunday School	\$0.00
Encouragement Ministry	
In Reach	\$879.15
Out Reach	\$312.48
Total Encouragement Ministry	\$1,191.63
Fellowship	
Worship	\$159.95
Youth	\$253.26
Pastoral	
401K	\$5,511.96
Salary	\$55,119.96
Guest Speakers	\$750.00
Mission	\$0.00
Retreat	\$3,146.90
Others	
Bank Services Charges	\$20.00
Building Improvement/Decoration	\$565.52
Computer/Hardware/Software	\$527.44
Office Supplies	\$458.41
Website	\$224.54
Dues and Subscriptions	\$18.00
<b>Total Expenses</b>	<b>\$67,947.57</b>
<b>Other Income</b>	
Fund Transfer Reserved Fund	\$6,000.00
<b>Total Other Income</b>	<b>\$6,000.00</b>
<b>Net Income</b>	<b>-\$179.13</b>

### NOTE:

1. RESERVED FUND BALANCE \$ 54,380.51 AS DEC. 20, 2010.
2. MISSION FUND BALANCE \$ 3,401.40 AS DEC. 20, 2010.

 1/25/10

EFCSouth Bay  
**Supermarket Coupon Report**  
12/31/10

		<u>Total</u>
Coupon inventory balance- 12/31/2010:		
99 Ranch Market	6,175.00	
Hanan Super Market	1,050.00	
Ralphs	-	
Marukai Super Markt	<u>980.00</u>	8,205.00
Bank statement balance-12/31/2010		9,045.89
Add:Receipts to be deposited in 1/2011		
Less:Expenses to be cashed in 1/2011		
<b>Total</b>		<b><u><u>17,250.89</u></u></b>

	<b>Bonus Income</b>				<b>Interest</b>	<b>Total</b>
Year	<u>Ta-Fa</u>	<u>Korean</u>	<u>Ralphs</u>	<u>Marukai</u>	<u>Earned</u>	<u>Income</u>
1995	2,750.00	310.00	650.00		14.40	3,724.40
1996	2,400.00	200.00	650.00		44.77	3,294.77
1997	1,800.00	199.50	525.00		43.06	2,567.56
1998	1,500.00	200.00	600.00		62.76	2,362.76
1999	2,300.00	150.00	600.00		45.40	3,095.40
2000	1,320.00	150.00	850.00		95.24	2,415.24
2001	1,020.00	200.00	250.00		53.09	1,523.09
2002	1,260.00	250.00	250.00	450.00	7.09	2,217.09
2003	1,200.00	300.00	100.00	300.00	4.54	1,904.54
2004	720.00	200.00	-	100.00	8.03	1,028.03
2005	900.00	200.00	-	300.00	21.74	1,421.74
2006	900.00	200.00	-	150.00	48.56	1,298.56
2007	900.00	300.00	-	200.00	45.36	1,445.36
2008	840.00	350.00	-	150.00	9.85	1,349.85
2009	1,080.00	450.00	-	100.00	10.19	1,640.19
2010	900.00	300.00	-	50.00	10.99	1,260.99
Total	<u>21,790.00</u>	<u>3,959.50</u>	<u>4,475.00</u>	<u>1,800.00</u>	<u>525.07</u>	<b><u><u>32,549.57</u></u></b>

**Deduction of Payments :**

9/14/01	Transfer to Church Building Fund	(12,000.00)
12/7/04	Purchase of chairs- 30ea	(470.56)
7/24/06	Purchase of chair Caddy- 3ea	(572.07)
8/14/06	Purchase of chairs- 72ea	(1,402.92)
10/11/06	Purchase of tables & chairs for kids	(832.88)
11/30/10	Deluxe check order charge	(20.25)

<b>Income Balance</b>	12/31/2010	<b><u><u>17,250.89</u></u></b>
-----------------------	------------	--------------------------------

**EFC SOUTH BAY, FINANCE DEPT. REPORT****YEAR: 2010****BUILDING FUND****DATE: JAN. 30, 2011****BEGINNING BALANCE** **\$ 153,977.69****INCOME**

2010 OFFERING \$ 11,767.00

INTEREST \$ 30.93

CENTRAL ACCOUNT TRANSFER TO PAY

BALANCE OF PARKING LOT PROJECT \$ 883.00

**TOTAL** **\$ 12,680.93****EXPENSE****1. PARKING LOT PROJECT**

TOTAL CONSTRUCTION CONTRACT COST \$ 158,600.00

PERMIT, FEE \$ 1,036.85

**2. EFCGA OBLIGATION**

2010 OTHER CHURCH BUILDING SUPPORTS \$ 3,760.00

**3. BANK MONTHLY MAINTENANCE FEE** \$ 112.00**TOTAL** **\$ 163,508.85****ENDING BALANCE** **\$ 3,149.77****TOTAL** **\$ 3,149.77****NOTE:**1. SUPERMARKET COUPON SALES ARE CONSIDERED AS BUILDING FUND.  
(SEE THE OTHER STATEMENT)2. FIXED ASSETS (14 ROSE HILLS UNITS) SALES WILL BE CONSIDERED AS  
BUILDING FUND. 1/25/11

**EFC SOUTH BAY, FINANCE DEPT. REPORT****YEAR: 2010****SABBATICAL FUND****JAN. 30, 2011**

<b>BEGINNING BALANCE</b>	<b>\$</b>	<b>34,410.12</b>
--------------------------	-----------	------------------

**INCOME**

FUND TRANSFER IN	\$	500.00	\$	500.00
------------------	----	--------	----	--------

INTEREST EARNED	\$	617.96	\$	617.96
-----------------	----	--------	----	--------

18 MONTHS CD

MATURITY 08/02/10

<b>TOTAL</b>	<b>\$</b>	<b>1,117.96</b>
--------------	-----------	-----------------

<b>EXPENSE</b>	<b>\$</b>	<b>-</b>
----------------	-----------	----------

<b>TOTAL</b>	<b>\$</b>	<b>-</b>
--------------	-----------	----------

<b>ENDING BALANCE</b>	<b>\$</b>	<b>35,528.08</b>
-----------------------	-----------	------------------

1/30/2011 